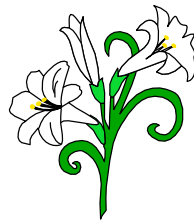
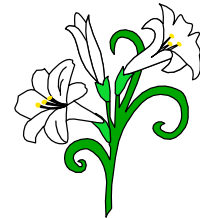
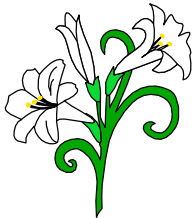


LAUNCESTON HORTICULTURAL SOCIETY Inc

Summer Show featuring Gladioli, Dahlias, Lilioms & Begonias



10th and 11th February 2024



Evandale Memorial Hall

High Street, Evandale

Show Manager (Inside): N. Button 6394 4750

Manager (Outside) – Joan Thompson 0419 510 922

Show Secretary: Sarah Katarzynski Ph 6344 1200

Email: flowershowsec@gmail.com

PO Box 2043, Launceston, Tas, 7250

Supplement to "Landscape" No. 136

Print Post Approved 100002795

LAUNCESTON HORTICULTURAL SOCIETY INC.

GLADIOLI, DAHLIA, LILIUM & BEGONIA
SHOW SCHEDULE, FOR 2024

- ❖ The Gladioli, Dahlia, Liliium and Begonia Show will be held, Saturday, 10th February and Sunday, 11th February 2024 at **Evandale Memorial Hall, High Street, Evandale**. Members and non-members are encouraged to participate.

- ❖ The show will be open to the public from 2pm, Saturday (after judging) till 5pm, and Sunday from 9am to 4pm.

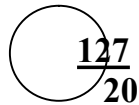
- ❖ Prize winners are requested to be present at the hall at 3.30pm on Sunday when prizes will be presented.

- ❖ Morning tea is available for exhibitors and helpers on Saturday morning. When open to the public, food, coffee and tea will be available from vendors outside.

- ❖ PLEASE NOTE: The hall is open on Friday evening from 7pm to 8pm and from 8am Saturday for benching of exhibits. Call Noel Button on 0408 772 785 before Friday to negotiate alternate times.

HOW TO ENTER IN OUR SHOWS

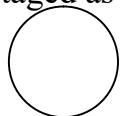
- A. Decide which sections you would like to enter.
- B. On arrival with your entries at the hall, see the Show Secretary at her desk and obtain a number and some white, round stickers. This number is to be written on a sticker on all your entries, along with the class number. Note the times the hall is open for entries.
- C. The class number is found in the schedule for the show. The class number goes on top and then a line and your number goes below this, e.g.

 Class Number
Exhibitor Number

- D. Place your entries on the appropriate tables. A steward will help you do this, or another exhibitor.
- E. If you are new to showing, you will be able to enter in the Novice Class or the Intermediate Class. In this case an N is added to the class number for Novice Class or an A for the Intermediate Class.
- F. There are tables in the hall to prepare entries and it would be appreciated if they were kept clean and free from water on the floor. Green beer bottles are generally used for most entries and are available at the hall. If not sure, ask someone. Allow plenty of time to prepare entries.
- G. At the end of the show, please remove your entries and prize certificates, taking stickers off bottles/containers, and help pack up.

SHOW RULES AND CONDITIONS OF ENTRY

1. Exhibitors must phone their COLLECTION entries (INCLUDING CUT FLOWER COLLECTIONS) and HANGING BASKET entries to the Show Secretary (Sarah Katarzynski), on 6344 1200 between 8.00pm and 9.00pm on **THURSDAY**, 8th February. Exhibitor numbers will be available.
All entries **MUST** be registered and in the hall by 10.30am on the morning of the show. All staging **MUST** be completed by 11.30 am. A warning bell will be rung at 11.15am.
Judging will commence no later than 12 noon.
2. Exhibits will only be accepted on the understanding that the exhibitor agrees to abide by and be bound by the show rules of the Society and the decision of the judges and show officials. In judging matters the decision of the judges is final
3. All exhibits **MUST BE** the property of, and be grown by the exhibitor, except in Floral Art where the exhibit **must be** set up by the exhibitor.
4. When an exhibit is judged for floral effect (e.g. baskets, etc.) it must be grown by and staged by the exhibitor.
5. Exhibits must be staged as directed by the Stewards and help will be given on request.



6. All exhibitors are encouraged to name their exhibits. If plant name is not known leave a blank card (available from the Show Secretary) so that the bloom may be identified and named.
7. Novice classes are for inexperienced exhibitors **ONLY**. Exhibitors must show in the Intermediate section after showing for 2 years in the Novice Section. The Launceston Horticultural Society Inc. Schedule Committee will assess the standard of the INTERMEDIATE exhibitor and determine if they should exhibit in the OPEN section in subsequent years.
8. **SOFTWOODS** are herbaceous and annual plants. **HARDWOODS** are shrubs and flowering trees.
9. N.A.S. means 'NOT AS SCHEDULED' and will not be judged. Any exhibit which has been disqualified is not eligible for "Best in Show" or similar awards.
10. Stems in all exhibits must touch water or water retaining material, except in wired floral art. No artificial aids are permitted.
11. Bottles and containers for exhibits **MUST** be of the appropriate size. Where bottles are used, they must be green.
12. Champion blooms will only be selected from single bloom entries – i.e., 1 stem per bottle.
13. Unless otherwise stated, each distinct cultivar is to be staged separately.
14. When the standard is not reached the judge is not obliged to award any prize. The judge's decision is final.
15. Prizes may not be awarded in any section where there are less than 3 entries.
16. Prizes awarded may be in the form of cash or gift voucher.
17. Where perpetual trophies are awarded, these remain the property of the Launceston Horticultural Society Inc. at all times.
18. Exhibitors must not remain in proximity of exhibits after 11.30am whilst stewards prepare for judging, or during judging.
19. The Society will take all reasonable care of the exhibits but cannot accept responsibility for loss or damage or for articles left at the conclusion of the show.
20. Exhibits may not be removed until 4pm Sunday. Any assistance packing up would be very much appreciated.

DAHLIA RULES

21. C. V. A. means "colour variation allowed".
22. Seedling definition:- An unnamed, undisseminated cultivar raised by the exhibitor from seed and cannot be shown for more than three years.
23. Once a cultivar wins a major award, it must be named and cannot be entered again as an unnamed cultivar.
24. All exhibitors must stage their own exhibits.
25. Inexperienced exhibitors may seek advice on staging.
26. Green Australian Dahlia Council vases or green containers/bottles are to be used.

GLADIOLI SECTION PRIZE LIST

- * **GRAND CHAMPION GLADIOLI BLOOM** – \$25 voucher donated by **PETRARCH'S BOOK SHOP.**
- * **BEST OPEN GLADIOLI** - \$20 cash donated by **L.H.S. Inc.**
- * **BEST INTERMEDIATE GLADIOLI** – \$20 cash donated by **LHS Inc.**
- * **BEST NOVICE GLADIOLI** - \$20 cash donated by **LHS Inc.**
- * **CLASS 1 - GLADIOLI – 3 SPIKES DISTINCT** – \$10 cash donated by **L.H.S. Inc..**
- * **CLASS 1A - GLADIOLI – 3 SPIKES DISTINCT** – H. R. Bulman Award and \$5 cash donated by **LHS Inc.**

OPEN GLADIOLI CLASSES

CLASS LARGE

1. 3 spikes, distinct colours - separate containers.
2. 3 spikes, 1 colour – separate containers
3. 1 spike, white or cream
4. 1 spike, yellow or buff
5. 1 spike, orange or apricot
6. 1 spike, salmon, pink or rose
7. 1 spike, red, scarlet or crimson
8. 1 spike, blue, lavender or purple
9. 1 spike, smoky
10. 1 spike, any other colour

MINIATURE GLADIOLI – 8.75CM (3 INCHES)

11. 3 spikes, distinct colours – separate containers
12. 1 spike, any colour

CONTAINERS OF GLADIOLI

(To be supplied by exhibitor)

13. Vase of 5 – 8 spikes LARGE
14. Vase of 5 – 8 spikes MINIATURE

GLADIOLI FLORETS

(To be shown in squat containers supplied by LHS)

15. 6 florets
16. 3 florets
17. 1 floret.

INTERMEDIATE GLADIOLI CLASSES. *Please read show rules*
Same as Open section but numbered 1A – 17A

NOVICE GLADIOLI CLASSES

Same as Open section but numbered 1N – 17N

DAHLIA SECTION – PRIZE LIST

- * **GRAND CHAMPION DAHLIA:-** Miss M Lowe Perpetual Award and \$50 voucher donated by **PLANTS PLUS, LEGANA** and \$50 cash donated by **L.H.S. Inc.**
- * **RESERVE CHAMPION DAHLIA:-** \$25 cash donated by **LHS Inc.**
- * **BEST OPEN DAHLIA:-** \$20 cash donated by **LHS Inc.**
- * **BEST INTERMEDIATE DAHLIA:-** \$20 cash donated by **LHS Inc.**
- * **BEST NOVICE DAHLIA:-** \$20 cash donated by **BROCKLANDS.**
- * **CLASS 18 – 9 DISTINCT DAHLIAS - THE BROCKLANDS DAHLIA CHAMPIONSHIP:-** 1st Prize - \$25, 2nd Prize - \$15, 3rd Prize - \$10 cash.
- * **CLASS 19 - THE LAUNCESTON DAHLIA CHAMPIONSHIP FOR SIX DISTINCT TASMANIAN-RAISED VARIETIES:-** \$20 cash donated by **MRS RUTH GATENBY.**
- * **CLASS 20 - THE FORMBY CHALLENGE** – the George Harding Memorial Award – 1st Prize \$30, 2nd Prize \$20 – donated by the **Tasmanian Dahlia Society.**
- * **CLASS 21 – DAHLIA CHALLENGE FOR L.H.S. MEMBERS ONLY** – Best bloom “Coorabel Astrid”. 1st Prize \$20 – donated by **BONNIE BANKS NURSERY.** 2nd Prize \$10 – donated by **L.H.S. Inc.**
- * **CLASS 22 - INTERMEDIATE CHAMPIONSHIP**
Prize 10 Dahlia tubers – donated by **MR C. SMITH.**
- * **CLASS 23 - NOVICE CHAMPIONSHIP**
Prize 10 Dahlia tubers – donated by **MR C. SMITH.**
- * **DON ROOM ENCOURAGEMENT AWARDS**
 - for the most points in the INTERMEDIATE section - \$15 cash – sponsored by **BROCKLANDS.**
 - for the most points in the NOVICE section - \$15 cash – sponsored by **BROCKLANDS.**

- * **BEST EXHIBIT DAHLIAS.** Best Exhibit cards may be awarded, plus a \$5 cash prize donated by **LHS Inc.,** for:-
 - Large or Giant Cactus**
 - Medium Cactus**

Small Cactus
Miniature Cactus
Large or Giant Decorative
Medium Decorative
Small Decorative
Miniature Decorative
Pompon
Exhibition Cactus
Waterlily
Fimbriated
Collarette
Ball Type
Bi-colour
Any other variety recognised by the Aust. Dahlia Council
Seedling
Vase of 3.

NOTE: CACTUS means cactus or semi-cactus, DECORATIVE means informal or formal decorative or semi-decorative. C.V.A.

DAHLIA CLASSES (*Exhibitors please read rules and regulations*)

Class 18 – 20 award classes open to all exhibitors. Dahlia blooms will be judged to ‘Australian Dahlia Council Standards’.

18. **Brocklands Dahlia Championship**
 9 distinct blooms:- one per container -
 Medium cactus, medium decorative, small cactus, small decorative, miniature cactus, miniature decorative, waterlily, ball and pom.
19. **Launceston Dahlia Championship** – Tasmanian - raised varieties
 6 distinct blooms of named varieties – one per container
20. **The Formby Challenge** – for the best George Harding-raised dahlia - 2 entries only per exhibitor.
21. **Dahlia Challenge for L.H.S. members only** – Best bloom
 “Coorabel Astrid”.
22. **Intermediate Championship.**
 4 dahlia blooms, any type or colour. One per container.

23. **Novice Championship.**

2 blooms in separate bottles. Can both be the same colour/variety
OR different.

OPEN DAHLIA CLASSES

LARGE OR GIANT – over 210mm

- 24. 3 blooms decorative, distinct (separate containers)
- 25. 1 bloom decorative
- 26. 3 blooms cactus, distinct (separate containers)
- 27. 1 bloom cactus

MEDIUM - 160mm to 210mm

- 28. 3 blooms decorative, distinct (separate containers)
- 29. 1 bloom decorative
- 30. 3 blooms cactus, distinct (separate containers)
- 31. 1 bloom cactus

SMALL –120mm to 160mm

- 32. 3 blooms decorative, distinct – one container
- 33. 3 blooms decorative, one variety (one container)
- 34. 1 blooms decorative.
- 35. 3 blooms cactus, distinct (one container)
- 36. 3 blooms cactus, one variety (one container)
- 37. 1 blooms cactus.

MINIATURE – Under 120 mm.

- 38. 3 blooms decorative, distinct (one container)
- 39. 3 blooms decorative, one variety (one container)
- 40. 1 bloom decorative
- 41. 3 blooms cactus, distinct (one container)
- 42. 3 blooms cactus, one variety (one container)
- 43. 1 bloom cactus

POMPON – under 50mm

- 44. 6 blooms, distinct (1 or 2 containers)
- 45. 3 blooms distinct (1 container)
- 46. 3 blooms, 1 variety (1 container)
- 47. 1 bloom Pompon

EXHIBITION CACTUS

- 48. 3 blooms, distinct (one container)
- 49. 1 bloom

WATERLILY –under 160mm

- 50. 3 blooms, distinct (one container)
- 51. 3 blooms, 1 variety (one container)
- 52. 1 bloom

FIMBRIATED

- 53. 3 blooms, distinct (3 containers)
- 54. 1 bloom

COLLARETTES – under 160mm

- 55. 3 blooms, distinct (one container)
- 56. 1 bloom

BALL TYPE

- 57. 3 blooms, distinct (one container)
- 58. 1 bloom

BI-COLOUR

- 59. 3 Blooms, Decorative, distinct (separate containers)
- 60. 1 Bloom Decorative
- 61. 3 Blooms, Cactus, distinct (separate containers)
- 62. 1 Bloom Cactus

OPEN TO ALL

ANY OTHER VARIETY – recognised as a type by the Australian Dahlia Council. Under 160 mm

- 63. 3 Anenome Dahlias (one container) N.N.D.
- 64. 1 Anenome Dahlia
- 65. 3 Stellar Dahlias (one container), distinct
- 66. 1 Stellar Dahlia
- 67. 3 Orchid Dahlias (one container), distinct
- 68. 1 Orchid
- 69. 3 Single Dahlias (one container), distinct
- 70. 1 Single Dahlia
- 71. 3 Peony Dahlias (one container), distinct
- 72. 1 Peony Dahlia

SEEDLING RAISED BY EXHIBITOR – Open to all exhibitors

Definition of a seedling: *“An unnamed, undisseminated cultivar raised by exhibitor from seed and cannot be shown for more than three years”*.

SEEDLING CLASS WILL BE POINT JUDGED AND RECORDED TO AUSTRALIAN DAHLIA COUNCIL STANDARDS AND REQUIREMENTS

- 73. 1 bloom, large or giant decorative
- 74. 1 bloom, medium decorative
- 75. 1 bloom, small decorative
- 76. 1 bloom miniature decorative
- 77. 1 bloom large or giant cactus
- 78. 1 bloom medium cactus
- 79. 1 bloom small cactus
- 80. 1 bloom miniature cactus
- 81. 1 bloom any other variety

INTERMEDIATE DAHLIA CLASSES - *Please read show rules*

Same as Open section but numbered 22 (Intermediate Championship) and 24A - 62A

NOVICE DAHLIA CLASSES – *Please read show rules and check Class 23 – the Novice Championship.*

- 82. 1 dahlia bloom – red
- 83. 1 dahlia bloom – yellow
- 84. 1 dahlia bloom – pink
- 85. 1 dahlia bloom – white
- 86. 1 dahlia bloom – mauve/purple
- 87. 1 dahlia bloom – any other colour
- 88. 1 dahlia bloom – multi-colour

LILIUM SECTION – PRIZE LIST

- * **GRAND CHAMPION LILIUM:-**\$25 cash donated by **LHS Inc.**
- * **BEST OPEN LILIUM:-** \$25 cash donated by **LHS Inc.**
- * **BEST INTERMEDIATE LILIUM:-** \$25 cash donated by **LHS Inc.**
- * **BEST POTTED LILIUM IN CONTAINER:-** \$25 cash donated by **L.H.S. Inc.**

OPEN LILIUM CLASSES

NB: Liliiums in the classes to be judged on a “stem” may be potted, but if there is more than one stem in the pot, only the best one will be judged.

89. Single stem, Asiatic hybrid
90. Single stem, Oriental hybrid
91. Single stem, Trumpet
92. Single stem, Orienpet (Conca D’Or, Silk Road, etc)
93. Single stem, species
94. Single stem, longiflorum.
95. Single stem hybrid not otherwise specified (L.A., Asiapet, etc)
96. Single stem, hybrid grown from seed by exhibitor
97. Single floret (flower), Asiatic
98. Single floret (flower), Oriental
99. Single floret (flower), Trumpet
100. Single floret (flower), longiflorum.
101. Single floret (flower), Orienpet
102. Single floret (flower), Oriental group species
103. Single floret (flower), hybrid not otherwise classified
104. Single floret (flower), species
105. 6 single liliium flowers in a flat container – at least 3 varieties.
106. Potted liliium in bloom – must be grown in pot – 1 stem only.
107. Potted liliiums in bloom – must be grown in pot – 3 stems NND.

INTERMEDIATE LILIUM CLASSES:- *Please read show rules.*
Same as Open section but numbered 89A – 107A

FLOWERING TUBEROUS BEGONIA SECTION

* **GRAND CHAMPION POTTED BEGONIA** - \$25 - donated by **Dr Patricia Kefford, Dentist.**

* **BEST OPEN POTTED BEGONIA** - \$20 - donated by **Dr Patricia Kefford, Dentist.**

* **BEST INTERMEDIATE POTTED BEGONIA** - \$20 - donated by **Dr Patricia Kefford, Dentist.**

* **BEST COLLECTION OF BEGONIA FLORETS** - \$20 – donated by **Dr Patricia Kefford, Dentist.**

BEST BEGONIA FLORET FROM CLASSES 113 to 118 - \$15 – donated by **Dr Patricia Kefford, Dentist.**

OPEN FLOWERING TUBEROUS BEGONIA CLASSES

108. 1 potted begonia – rose form

109. 1 potted begonia – bicolour

110. 1 potted begonia – rose form – ruffled

111. 1 potted begonia – Picotee

112. 1 potted begonia – Picotee – ruffled

113. 1 potted begonia – seedling – 1st flowering

114. Large (over 130mm) - collection of 6 begonia florets (open to all).

115. Large (over 130mm) - collection of 4 begonia florets (open to all).

116. Large (over 130mm) – single (1) begonia floret (open to all)

117. Small (under 130mm) – collection of 6 begonia florets (open to all)

118. Small (under 130mm) – collection of 3 begonia florets (open to all)

119. Small (under 130mm) – single (1) begonia floret (open to all).

INTERMEDIATE FLOWERING TUBEROUS BEGONIA CLASSES

Corresponding to Open section but numbered 108A – 113A



CUT FLOWERS SECTION – PRIZE LIST

- ❖ **BEST EXHIBIT – OPEN CUT FLOWER SECTION - \$25**
voucher donated by Mark Hay of **ALLAN’S GARDEN CENTRE, PROSPECT**
- ❖ **BEST EXHIBIT – INTERMEDIATE CUT FLOWER SECTION**
- \$25 voucher donated by Mark Hay of **ALLAN’S GARDEN CENTRE, PROSPECT.**
- ❖ **BEST EXHIBIT – FUCHSIA - \$10 cash donated by L.H.S. Inc.**
- ❖ **BEST EXHIBIT – ROCK AND ALPINE SECTION - \$10 cash**
donated by **L.H.S. Inc.**
- ❖ **BEST EXHIBIT – HYDRANGEA - \$20 cash donated by L.H.S. Inc.**

OPEN CUT FLOWER CLASSES

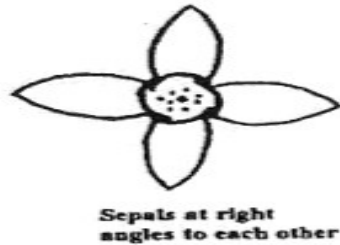
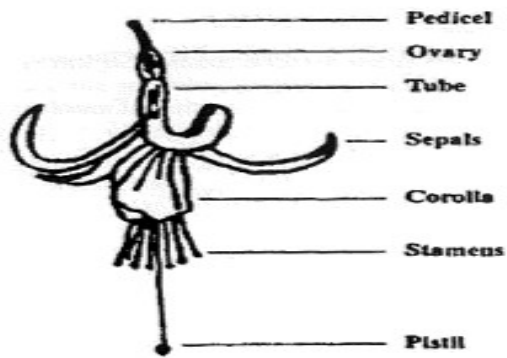
The Secretary MUST BE notified if entering Classes 120, 121, 122, 123, 126, 127 and 128 between 8pm and 9pm, Thursday, 8th February – see Show Rule 1.

120. Garden Flowers 6 distinct types - must include softwood and hardwood, (separate containers), not more than 3 stems of each variety per container.
121. Garden flowers, 3 distinct types, softwood (separate containers) not more than 3 stems of each variety per container
122. Garden flowers, 3 distinct types, hardwood, (separate containers) not more than 3 stems of each variety per container
123. Australian Natives – 3 distinct types (separate containers), maximum of 3 stems each.
124. Grevillea, 1-3 stems
125. Leptospermum, 1-3 stems
126. Delphinium, 3 spikes (separate containers)
127. Delphinium, 1 spike
128. Sunflower, 1 head
129. Any other flower, softwood, not included in Schedule, 1- 3 stems
130. Any other flower, hardwood, not included in Schedule, 1- 3 stems
131. Scabiosa, max 6 stems (one container)
132. Pelargonium – zonal (geraniums), 3 distinct colours (one container).
133. Pelargonium – zonal (commonly called geranium), 1 stem.

134. Pelargonium – regal, 3 stems distinct colours (one container).
135. Pelargonium – regal, 1 stem.
136. Pelargonium – peltatum (ivy geranium), 3 distinct colours – one container.
137. Pelargonium – peltatum (ivy geranium), 1 stem.
138. Penstemons, 3 stems, distinct colours (one container)
139. Penstemon, 1 variety (1-3 stems)
140. Roses, 3 blooms, distinct colours (one container)
141. Rose, 1 stem
142. Amaryllis, 1- 3 stems (one container)
143. Agapanthus – name if possible, 1-3 stems (one container)
144. Alstroemeria, 3 stems (one container)
145. Zinnias, 1- 6 stems,(one container)
146. Zinnias, a container small-flowered, not exceeding 12 blooms
147. Collection of herbaceous perennials, at least 4 varieties (one container)
148. Container of flowers, one type, any colours
149. Vase of garden dahlias
150. Foliage from 3 distinct types (one container)
151. Vase of culinary herbs
152. Vase of fruits and berries – minimum of 3 stems.
153. Petunias, 3 single florets distinct. (LHS container supplied)
154. Petunias, 3 double florets distinct (LHS container supplied)
155. Petunia, 1

FUCHSIA SECTION

- A. *A fuchsia bloom is complete only when it has a pedicel, a seed pod, a tube, 4 sepals, a corolla, 8 stamens and a pistil.*
- B. *A single fuchsia has only 4 petals in the corolla.*
- C. *A semi-double fuchsia has 5, 6 or 7 petals in the corolla.*
- D. *A double fuchsia has 8 or more petals in the corolla, not including petaloids.*
- E. *All normal fuchsias have only 4 sepals.*



156. Fuchsias, 3 stems, distinct varieties (separate containers – supplied by LHS)
157. Fuchsia, 1 stem (container supplied by LHS)
158. Fuchsias, 6 distinct blooms, doubles, 2 containers, 3 blooms to each container (supplied by LHS)
159. Fuchsias, 3 distinct blooms, doubles, (one container supplied by LHS)
160. Fuchsia, 1 bloom, double, (one container - supplied by LHS)
161. Fuchsias, 6 distinct blooms, semi double, 2 containers, 3 blooms to container (containers supplied by LHS)
162. Fuchsias, 3 distinct blooms, semi double (LHS container)
163. Fuchsia, 1 bloom, semi double (LHS container)
164. Fuchsias, 6 distinct blooms, single, 2 containers, 3 blooms to each container (containers supplied by LHS)
165. Fuchsias, 3 distinct blooms, single (LHS container)
166. Fuchsia, 1 bloom single (LHS container)
167. Fuchsias, collection, not more than 10 distinct blooms, to be shown in flat container (own container)

NB: Launceston Horticultural Society containers available from cut flower stewards.

INTERMEDIATE CUT FLOWERS

Corresponding with Open section but numbered 120A – 167A

ROCK AND ALPINE – OPEN TO ALL

(Supply your own container)

168. 1 rock and alpine flower, 1 – 12 stems
169. Rock and alpine flowers, 3 distinct varieties, exhibited in separate containers, 1 – 12 stems per container
170. Collection of 6 different rock and alpine flowers, 2 stems of each, in one container
171. Container of rock and alpine flowers.
172. Dianthus, 3 stems, NND
173. Cyclamen, 1 – 12 stems
174. Diascia, 1 – 12 stems
175. Campanula, 1 – 12 stems
176. Cranesbill, 1 - 12 stems.

HYDRANGEA CLASSES – OPEN TO ALL

177. Collection, any number of stems (one container).
178. 6 distinct colours, staged in 2 containers, 3 stems in each.
179. 3 distinct colours (one container).
180. Blue shades, 1 variety, 1 to 3 stems (one container)
181. Pink shades, 1 variety, 1 to 3 stems (one container)
182. Mauve shades, 1 variety, 1 to 3 stems (one container)
183. Red shades, 1 variety, 1 to 3 stems (one container)
184. White, 1 variety, 1 to 3 stems (one container)
185. Green, 1 variety, 1 to 3 stems (one container)
186. Multi-coloured – 1 stem
187. Autumn tinted – 1 stem
188. 1 dwarf variety – 1 stem
189. Any other variety – 1 to 3 stems (one container).

CACTI AND SUCCULENTS

PRIZES – all donated by Cactus and Succulent Group of L.H.S. Inc.

BEST EXHIBIT – CACTUS - \$25 cash.

BEST EXHIBIT - SUCCULENT - \$25 cash.

BEST EXHIBIT - MULTI-PLANTED CONTAINER, CACTI AND/OR SUCCULENTS - \$25 cash
BEST EXHIBIT - CACTUS/SUCCULENT – INTERMEDIATE - \$20 cash

OPEN CACTI AND SUCCULENT SECTION

190. 1 potted cactus, any species.
191. 1 potted cactus, Cereus.
192. 1 potted succulent, any species.
193. 1 potted succulent, Echeveria.
194. 1 flowering cactus or succulent.
195. 1 multi-planted container, cacti and/or succulents.
196. 1 ugliest cactus/succulent.

CACTI AND SUCCULENTS – INTERMEDIATE

Same as Open Section but numbered 190A – 196A

CONTAINER GROWN PLANTS SECTION – PRIZE LIST

- * **BEST EXHIBIT – FOLIAGE - \$25 cash donated by L.H.S.Inc.**
- * **BEST EXHIBIT – FLOWERING - \$25 cash donated by L.H.S. Inc.**
- * **BEST EXHIBIT – MULTI-PLANTED CONTAINER - \$25 cash donated by L.H.S. Inc.**
- * **BEST EXHIBIT – INTERMEDIATE SECTION - \$25 voucher donated by Mark Hay of ALLAN’S GARDEN CENTRE, PROSPECT.**
- * **BEST EXHIBIT – HANGING BASKET – OPEN TO ALL:- \$25 cash donated by L.H.S. Inc.**
- * *Exhibitors in Hanging Basket Section must notify Secretary.*

OPEN CONTAINER GROWN PLANTS

It is not permitted, under Australian Horticultural Judges’ Association Rules, to place the growing container, for any reason, inside another clear or decorative container.



197. 1 potted plant, flowering
198. 1 potted plant, foliage
199. 1 potted plant, Alpine
200. 1 potted fern
201. 1 potted fuchsia bush
202. 1 potted fuchsia standard
203. 1 multi planted container.
204. Any other container grown plant
205. 1 potted pelargonium – zonal or regal

INTERMEDIATE CONTAINER GROWN PLANTS

Corresponding to Open section but numbered 197A – 205A.

OPEN TO ALL – HANGING BASKETS

Note: “Hanging plant/s in a hanging container”. Ideally plants should **hang** from the top of the container and the container should be completely **covered all around** (or as near as possible).

- *Exhibitors must notify Secretary*

206. Hanging foliage plant/plants, must be grown in hanging container.
207. Hanging plant/plants in flower, must be grown in hanging container
208. Hanging multi-planted container – different types.

FRUIT AND VEGETABLE –PRIZE LIST

- * **BEST EXHIBIT IN THE FRUIT SECTION** - \$25 cash donated by **LHS Inc.**
- * **BEST EXHIBIT IN THE VEGETABLE SECTION** - \$25 cash donated by **LHS Inc.**
- * **BEST EXHIBIT IN THE BASKET SECTION** - \$25 cash donated by **LHS Inc.**
- * **LARGEST ZUCCHINI** - \$15 cash donated by **BONNIE BANKS NURSERY.**
- * **BEST TOMATO EXHIBIT** - \$15 cash donated by **BONNIE BANKS NURSERY.**

FRUIT CLASSES - OPEN TO ALL

NB: Fruit must be ripe and edible and displayed on LHS plates and saucers – no decorations.

- 209. Stone fruit, 1 plate, max 5
- 210. Lemons, 1 plate, max 3
- 211. Other citrus, 1 plate – max 3
- 212. Berries, 1 saucer – max 12
- 213. Any other fruit not included in Schedule – max 12

VEGETABLE CLASSES – OPEN TO ALL

No decorations. Bunches do not need plates.

- 214. Beans, French, 1 plate, max 10
- 215. Beans, Butter, 1 plate, max 10
- 216. Beans, Runner, 1 plate, max 10
- 217. Longest bean.
- 218. Beetroot, 1 bunch of 3
- 219. Carrots, 1 bunch of 3
- 220. Cucumber 1
- 221. Garlic, 1 plate, max 3
- 222. Lettuce, 1 head
- 223. Onions, 1 plate of 3
- 224. Potatoes, 3 of 1 variety, 1 plate.
- 225. Rhubarb, 1 bunch, 5 stalks, tied, leaves trimmed.
- 226. Silverbeet or Chard, 1 bunch of 5 leaves
- 227. Squash, 1 plate, max 3
- 228. Sweet corn, 3 cobs
- 229. Tomatoes, 1 plate or saucer, 3, distinct, named if possible.
- 230. Tomatoes, 1 plate or saucer, 1 variety, max 3, named if possible.
- 231. Tomatoes, 1 truss
- 232. Zucchini, 1 – 20cm or less.
- 233. Largest zucchini - >20cm.
- 234. Any other vegetable not included in schedule.

VEGETABLE/FRUIT BASKET – OPEN TO ALL

All fruit and vegetables must be ripe and edible and grown by exhibitor

- 235. Large basket of fruit and vegetables - must be ripe and edible - at least 4 varieties - and must be grown by exhibitor

236. Small basket of fruit and vegetables – must be ripe and edible – at least 4 varieties – and must be grown by exhibitor
237. Basket of fruit
238. Basket of vegetables
-

FLORAL ART SECTION

All entries to be lodged with Gayle Carroll on 6344 9953 by Thursday, 8th February 2024 up until 8pm.

Exhibitors, it would be appreciated if you could help with the dismantling and folding up of the material after 4pm on the Sunday.

NO WORKING ON SHOW BENCH UNLESS ABSOLUTELY NECESSARY

OPEN FLORAL ART – Space allowed 65cm

All prizes donated by L.H.S. Inc.

- **JOAN WARD AWARD FOR THE MOST OUTSTANDING EXHIBIT IN OPEN FLORAL ART - \$30 cash.**
- First prize in each class receives \$15 cash and second prize receives \$10 cash.

239. “Bring Australia Indoors” – modern arrangement featuring Australian flowers and foliage.
240. Olde World Charm.
241. Caught in a Frame.

INTERMEDIATE FLORAL ART – Space allowed 65cm

*** MYRTLE BURROWS AWARD FOR THE MOST OUTSTANDING EXHIBIT IN INTERMEDIATE FLORAL ART – \$25.**

* First prize in each class receives \$10 cash and second prize \$5 cash.

242. “All things Australian” – arrangement of your choice featuring Australian flowers and foliage.

243. Contemporary table arrangement.

244. "Love is in the Air".

AMATEUR FLORAL ART – Space allowed 65cm

***BEST EXHIBIT IN AMATEUR SECTION - \$25 cash.**

* First prize in each class receives \$10 cash and second prize of \$5 cash.

245. Horizontal arrangement featuring succulents.

246. Table arrangement for a Valentine's Day buffet.

CHILDREN'S SECTION

All Children's Section entries are to be lodged with Gayle Carroll, telephone 6344 9953, by Thursday, 8th February 2024, up until 8pm. **A limit of 2 entries in any class.**

PRIZES

*** BEST EXHIBIT OVERALL IN THE CHILDREN'S FLORAL ART SECTION – donated by L.H.S. Inc - \$10 cash.**

*** FIRST PRIZE IN EACH CLASS RECEIVES \$5 AND SECOND PRIZE RECEIVES \$2.**

CHILDREN'S FLORAL ART

6 Years And Under

247. Frog in a garden.

248. Mug of sunshine.

7 - 10 Years

249. A beach scene.

250. Decorate a gift box.

11 – 14 Years

251. Flowers and weathered wood.

252. Australian native flowers and foliage in terracotta.

JUNIOR SECTION – 14 YEARS AND UNDER

First place in each class receives \$5 and second place receives \$2.
Prizes donated by the **L.H.S. Inc.**

CUT FLOWERS

253. Any cut flower, 1-3 stems, in a container.

CONTAINER GROWN PLANTS

254. A potted plant (not cactus or succulent)

CACTI AND SUCCULENTS

255. 1 potted cactus – any species.

256. 1 potted succulent – any species.

257. 1 multi-planted container.

FRUIT AND VEGETABLES

258. A variety of fruit and/or vegetables.

259. 1 type of fruit or vegetable.

**The Launceston Horticultural Society Inc.
gratefully acknowledges the support of the following
for their sponsorship of prizes:-**

Dr Patricia Kefford, Dentist

Mark Hay - Allan's Garden Centre, Prospect

Brocklands

Plants Plus, Legana

Bonnie Banks Nursery, Gravelly Beach

Mrs Ruth Gatenby

Petrarch's Bookshop

Mr Charlie Smith, St Helens

Tasmanian Dahlia Society

Waratah Agencies

Patrick Graham, Glebe Gardens

LHS Inc.